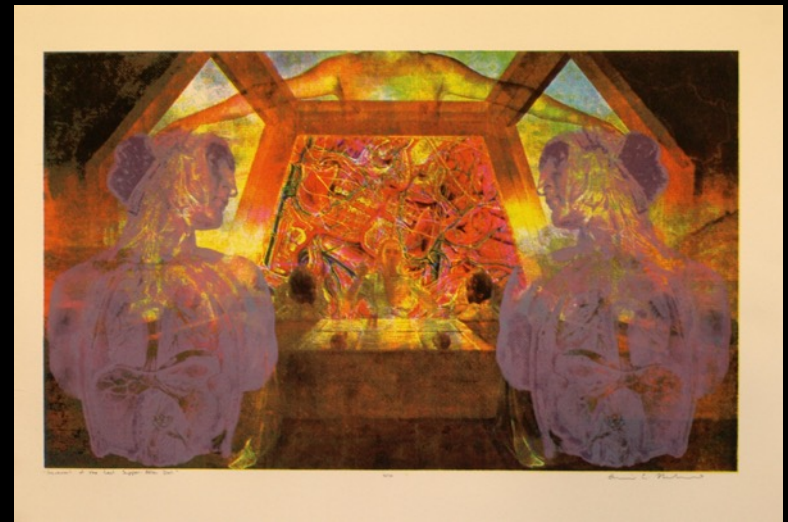
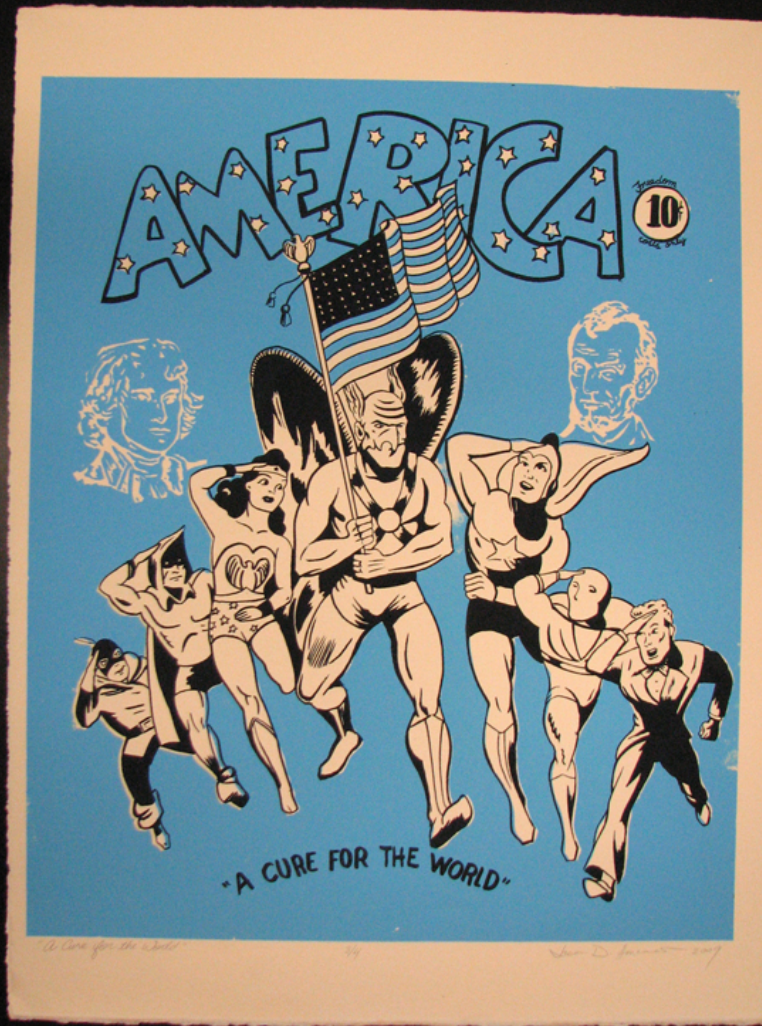


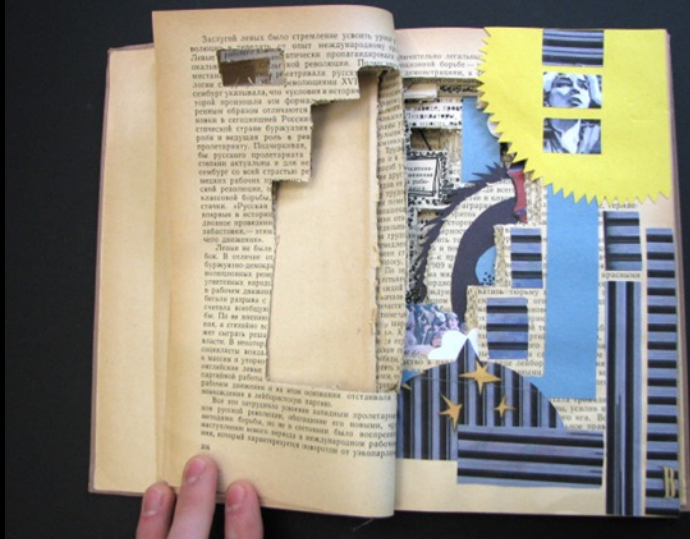
DANIEL MAW

-student work-

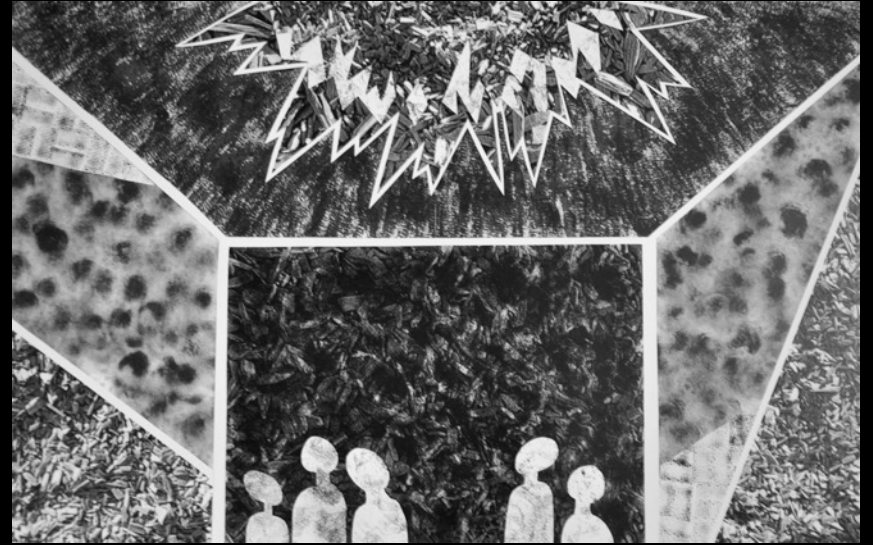








Foundations 3D (Altered Book Project) | 2010

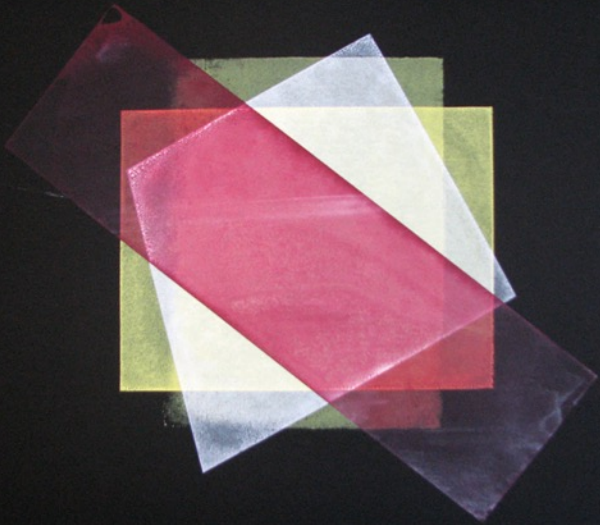








Foundations 3D (Inflatables Project) | 20' x 20' x 20' | 2010



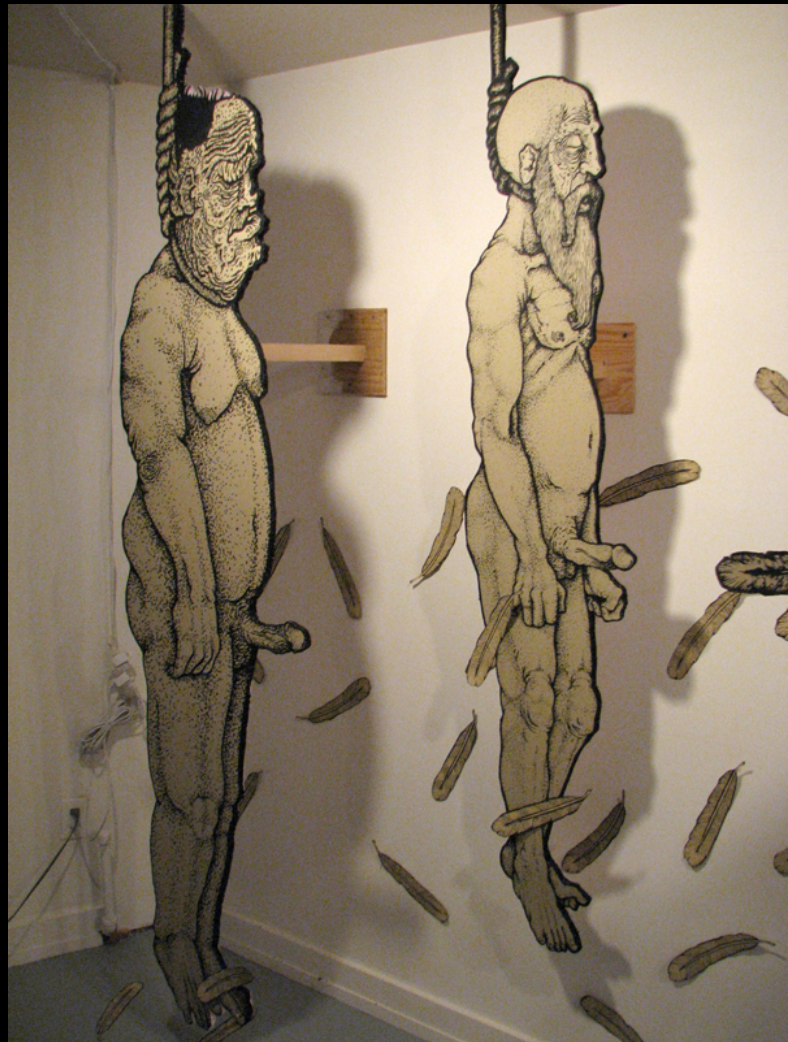
Foundations 2D (Cut Paper Stencil Project) | 2009-10



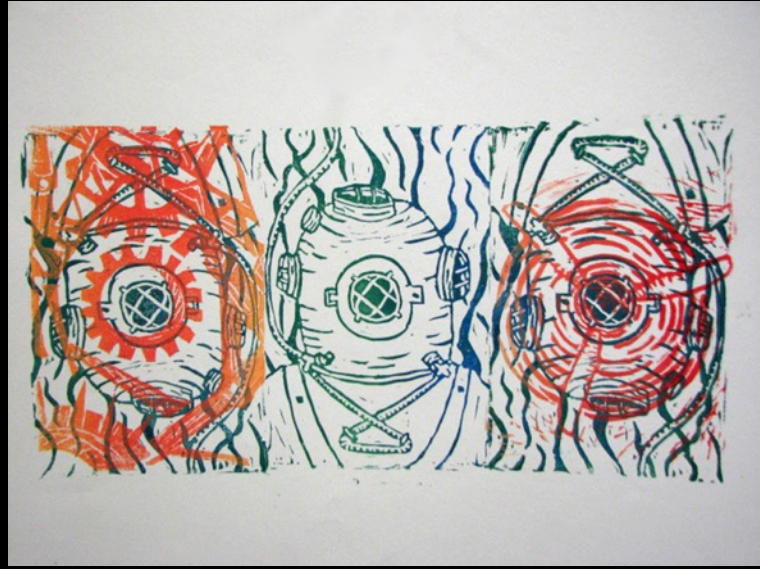
Foundations 4D (Cut Paper Installation) | 20' x 20' | 2008

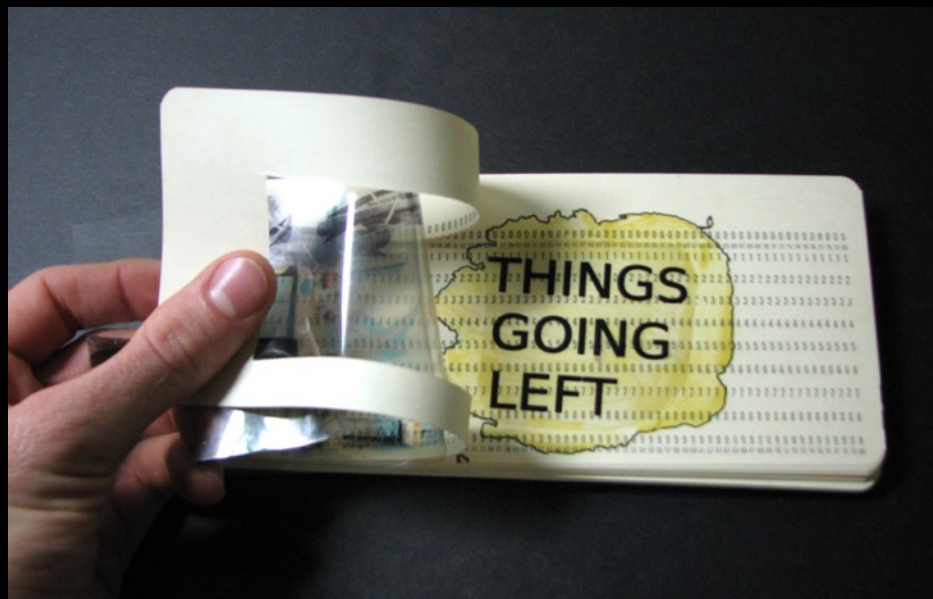


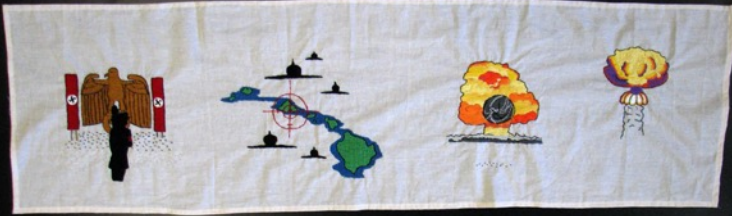
Screenprinting | 2009-10



Foundations 4D (Installation Project) | 8' x 25' x 10' | 2009







Foundations 3D (Embroidered Tapestry) | 48" x 16" | 2010







Foundations 3D | 20' x 15' | 2009





Foundations 3D (Collection Project) | 2009

THE END